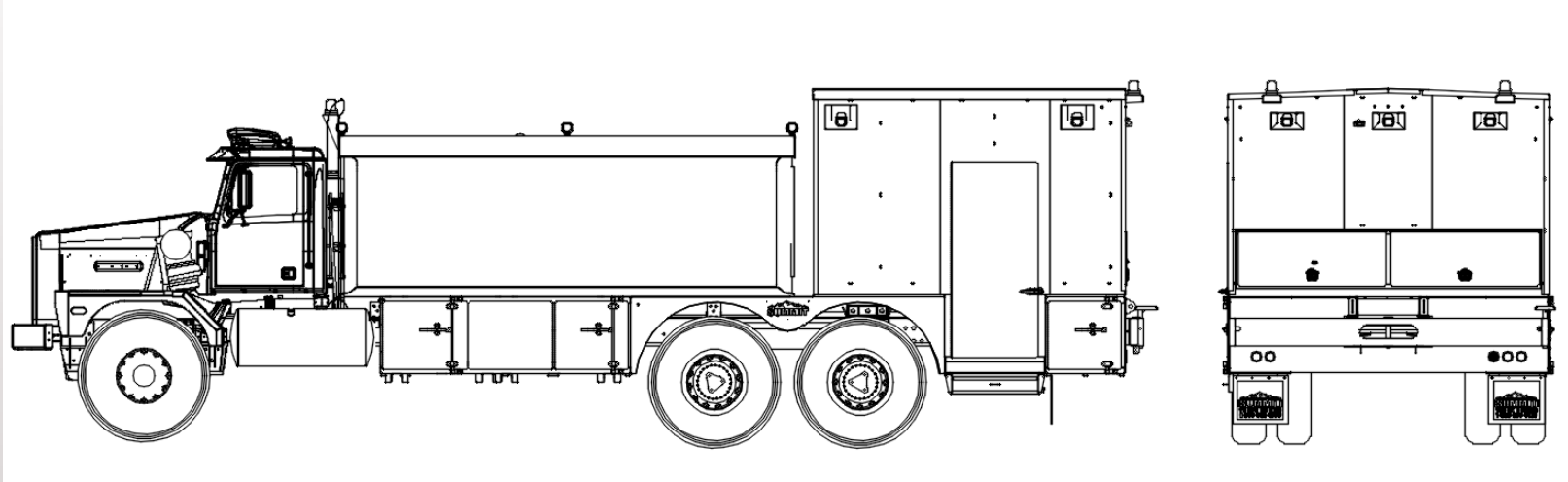


WESTERN STAR XD

OFF ROAD MINE LUBE TRUCK



Presented by: Brent Thompson



WESTERN STAR 6900XD

2012 MODEL YEAR

DETROIT DD15-505 HP, 1650 FT-
LBS

ALLISON 4500 RDS
TRANSMISSION

45MPH SPEED LIMIT

28,000LB FRONT AXLE

110,000LB PLANETARY WIDE
TRACK TANDEM DRIVE AXLES

10.66 REAR AXLE RATIO

HENDRICKSON RS1000
110,000LB REAR SUSPENSION

64" AXLE SPREAD

138,000LB GVWR

STE

TANDEM AXLE OFF ROAD MINE TRUCK

6786

5000 GALLON OFF-ROAD DIESEL

140" WIDE ENCLOSED LUBE BODY



BODY CONSTRUCTION:

- HEAVY CONSTRUCTION FOR ROUGH SERVICE APPLICATIONS
 - 10ga. Galvannealed compartment construction
- UNDERBODY COMPARTMENTS MOUNTED BELOW FUEL TANK AND LUBE COMPARTMENT
 - All compartments include van body cam-style door latches and mechanical spring door over-center door retainers
 - Aluminum compartment doors with full perimeter rubber weather seal
 - 47" deep compartments below fuel tank
- 140" WIDE x 137" LONG x 91" TALL ENCLOSED REAR LUBE COMPARTMENT
 - Rubber isolated, partially spring mounted for rough terrain
 - Double panel construction with 2" foam insulation
 - 36" DS entry door access to lube compartment



ELECTRICAL AND LIGHTING

- Weather resistant switch and relay box installed in rear compartment, accessible from ground
- Interior compartment lighting
 - Adjustable LED lighting activated by switch in control panel
 - Six interior van body lights controlled by separate switch
- Exterior side and rear facing scene lights
 - Nordic N45 heavy duty HID work light
- Forward facing Vision X LED lightbar mounted on cab
- Four corner mounted amber strobe lights installed on rear compartment and on chassis cab
- Rear mounted/facing backup camera with display in cab
- Espar Airtronic D5 air heater installed in lube compartment



SYSTEMS- HYDRAULIC

- CHASSIS HYDRAULIC SYSTEM
 - Load sense hydraulic system with single transmission mounted LS pump
 - Single PVG load sense valve mounted in lube compartment, controlling air compressor and lube functions
 - 92cc pump with maximum displacement of 30gpm
 - Adjustable and proportional LS valve offers multiple system operation with max limitations
 - Manual override controls accessible on valve
 - 40 gallon hydraulic reservoir
 - 12v hydraulic oil cooler
- AIR SYSTEM
 - Cast iron head, 40cfm hydraulic driven, reciprocating compressor installed on HD slide tray
 - 100% duty cycle rated compressor
 - Integrated hydraulic cooler in compressor
 - 19 gallon ASME underbody air reservoir with safety relief valve
 - ½"x50' Hannay SRW hose reel
 - Lincoln FLR



SYSTEM- FUEL

- 5000 GALLON OFF-ROAD DIESEL SYSTEM
 - ¼" steel tank with three emergency valve provisions in bottom
 - No. 1 Diesel- 3" Valve (manual operation)
 - No. 2 Diesel- 3" Valve (manual operation)
 - Bottom Fill- 4" Direct bottom access
 - Dual 120gpm rated delivery systems
 - Blackmer 2.5" sliding vane delivery pumps
 - Inlet strainer installed on each pump
 - Dual Nu-Flow turbine delivery meter with digital display
 - Dual Hannay ERW hose reels with 2"x50' hose with FlowTech fast fill delivery nozzles
- Dual Titan Viking diesel delivery filters installed in lube compartment
 - 30 micron filter elements
 - Filters mounted above drain tray and include separate drain hoses
- Additional low flow diesel circuit with 1"x30' ERW hose reel and auto-shutoff fuel nozzle
 - Electrically isolated to prevent high and low simultaneous operation

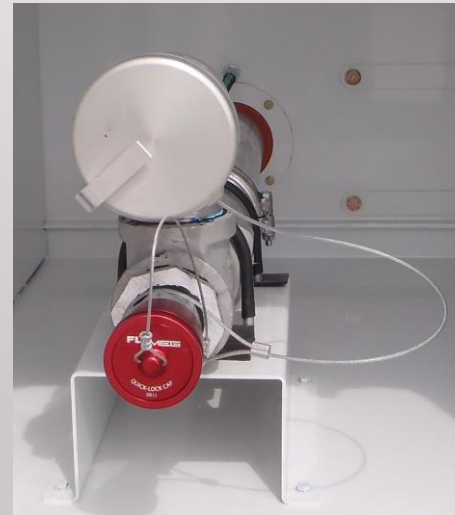


FUEL PUMPS AND REMOTE FILLS

- DIESEL DELIVERY PUMPS
 - Blackmer 2.5" sliding vane pumps
 - Removable basket strainers



- REMOTE FUEL FILL
 - 4" Flow-Tech



- PRODUC REMOTE FILLS
 - 3/4" ISO Q-D



SYSTEMS- NEW OIL

- NEW OIL SYSTEM
 - (2) 150 gallon new oil systems
 - Mild Steel construction
 - Hydraulic driven new oil pumps with 20gpm delivery rate
 - Pumps mounted in lube compartment, below fuel and product filters
 - Lincoln delivery meters
 - Hannay SRW hose reel with 50' of $\frac{3}{4}$ " hose and high volume Lincoln delivery nozzle
 - Donaldson "Duramax" product delivery filters with filter condition indicator and internal bypass
 - 16micron filter
- Tank level gauges with remote readouts located toward PS of rear compartment
 - Rochester internal swing arm level gauge with top level indicator
- Both New Oil circuits can be operated simultaneously if required
- Delivery rate will change as compressor or multiple systems operate simultaneously
- Remote fills for new oils

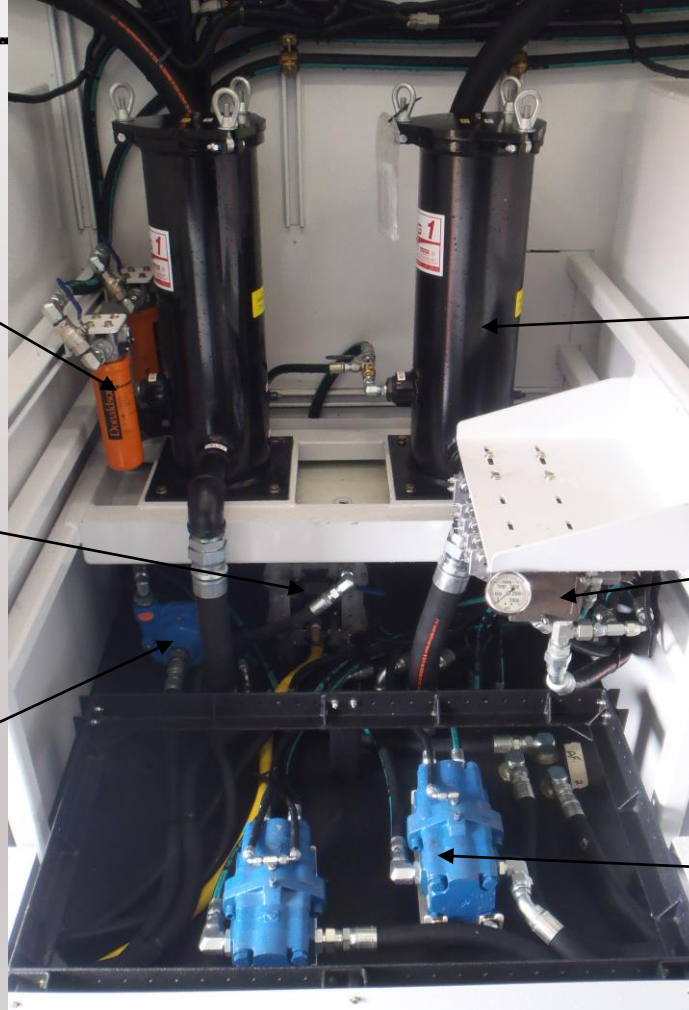


PRODUCT PUMPS / FILTERS

NEW OIL DELIVERY FILTER

DEF DELIVERY PUMP

NEW AF DELIVERY PUMP



TITAN FUEL DELIVERY FILTER

LOAD SENSE VALVE

NEW OIL DELIVERY PUMP



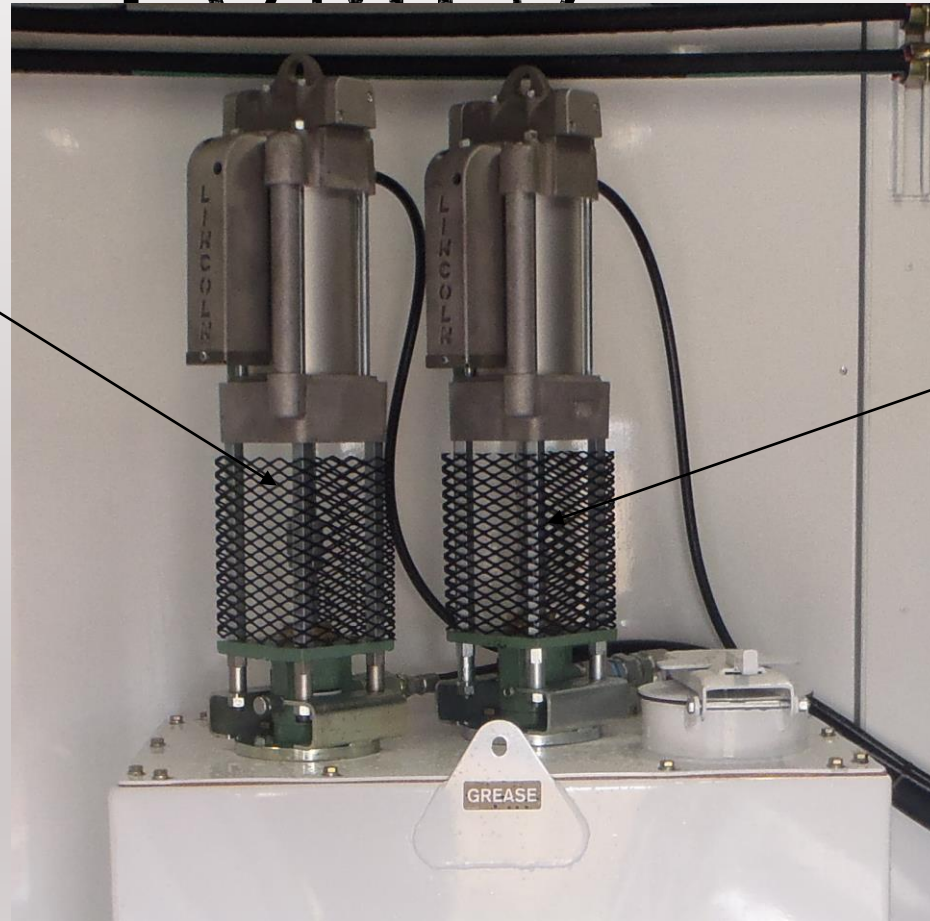
SYSTEMS- GREASE

- GREASE SYSTEM
 - Single compartment 400# grease system
 - Approx. 55 gallon bulk tank
 - 6" fill cap
 - High volume, low pressure grease system:
 - Air operated 12:1 Lincoln grease pump
 - 21 cycles per gallon delivery
 - 1" x 30' ERW Hannay hose reel with ball valve and tube
- Low volume, high pressure grease system
 - Air operated 50:1 Lincoln grease pump
 - 78 cycles per gallon
 - 3/8" x 50' SRW Hannay hose reel with Z swivel and grease delivery nozzle



GREASE PUMPS

LOW VOLUME, HIGH PRESSURE
50:1 GREASE PUMP



HIGH VOLUME, LOW PRESSURE
12:1 GREASE PUMP



SYSTEMS- ANTIFREEZE AND DEF

- NEW ANTIFREEZE SYSTEM
 - 150 gallon new antifreeze system
 - Stainless steel construction tank
 - Hydraulic driven centrifugal delivery pump
 - Hannay SRW $\frac{3}{4}$ " x 50' reel with Lincoln high volume meter and delivery nozzle
 - Tank level gauges with remote readouts located toward PS of rear compartment
 - Rochester internal swing arm level gauge with top level indicator
 - Remote fill provision
- DIESEL EXHAUST FLUID SYSTEM
 - 150 gallon new DEF system
 - Stainless steel construction tank
 - Lincoln air operated $\frac{1}{2}$ " polyethylene AODD
 - Hannay SRW $\frac{1}{2}$ " x 50' reel with Lincoln in-line delivery meter and DEF specific control nozzle
 - No remote gauge on this system



QUESTIONS/COMMENTS.....

■ ■

- BRENT THOMPSON
 - Product Development
 - E: bdthompson@summitbodies.com
 - Ph: 303-260-6773

